

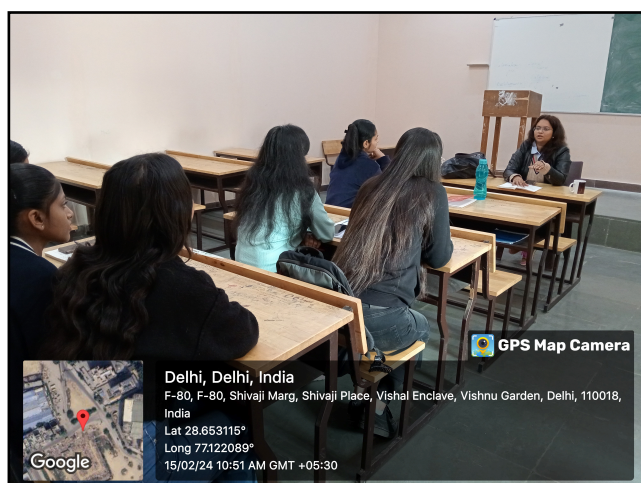
# SHIVAJI COLLEGE UNIVERSITY OF DELHI Remedial Cell



Remedial Cell at Shivaji College aims at strengthening language as well as content based skills enhancement of students who struggle with it the most.



We operate on departmental levels as well as cell level where teachers, fast learner's take lead role in creating an inclusive environment for learning under the mentorship and supervision of dedicated faculty members.



## Our Goals:

**1. Identifying Areas of Weakness:** Remedial cells begin by identifying specific areas where students are struggling through diagnostic assessments and teacher observations.

**2. Individualised Learning Plans:** Once weaknesses are identified, individualized learning plans are developed for each student, outlining the skills or concepts that need improvement and the strategies to address them.



**3. Closing Learning Gaps:** The primary aim is to help students close learning gaps by reteaching material, providing additional practice, and offering alternative explanations tailored to individual learning styles.

**4. Building Foundational Skills:** Remedial cells focus on building essential foundational skills such as literacy, numeracy, critical thinking, study skills, and organizational skills.

**5. Promoting Independence and Self-Advocacy:** Students are taught self-monitoring and self-regulation strategies to become independent learners who can advocate for their own needs.



Creative Learning Programs.

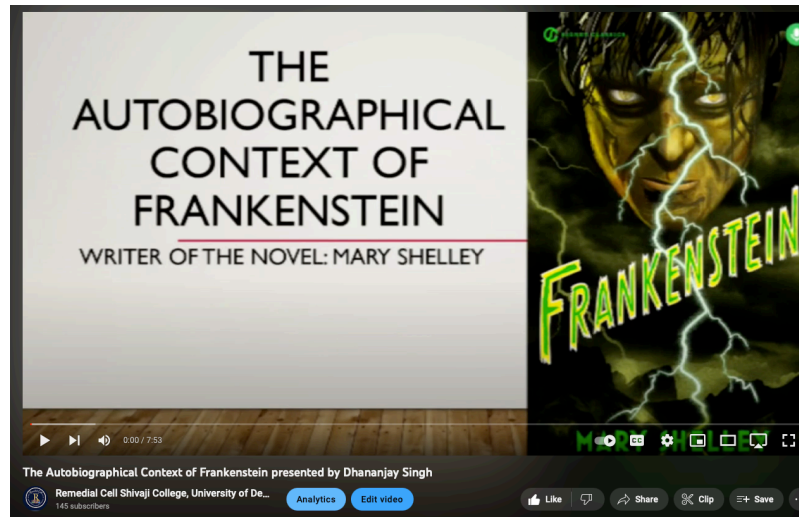
**6. Monitoring Progress and Adjusting Instruction:** Progress is regularly monitored, and instruction is adjusted as needed to ensure students are making gains and further intervention is provided when necessary.

**7. Integration with Regular Classroom Instruction:** Remedial cells are integrated with regular classroom instruction to ensure coherence in students' learning experiences and alignment of goals and objectives.

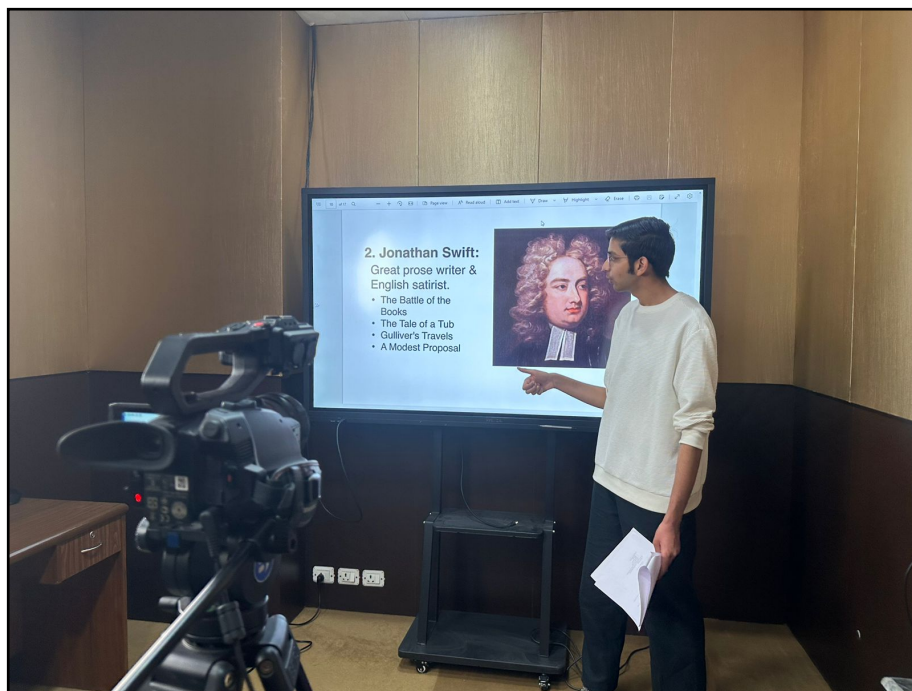


Ms. Shreya Flint  
Students Taking Leadership Roles as Educators.





Mr. Dhananjay Singh  
Reaching Out to students through You Tube Channel of  
Remedial Cell.



Mr. Madhav Rao.  
Boosting Confidence and Motivation through content Creation:  
Remedial support aims to boost students' confidence and  
motivation by setting achievable goals, acknowledging  
progress, and offering positive reinforcement

